



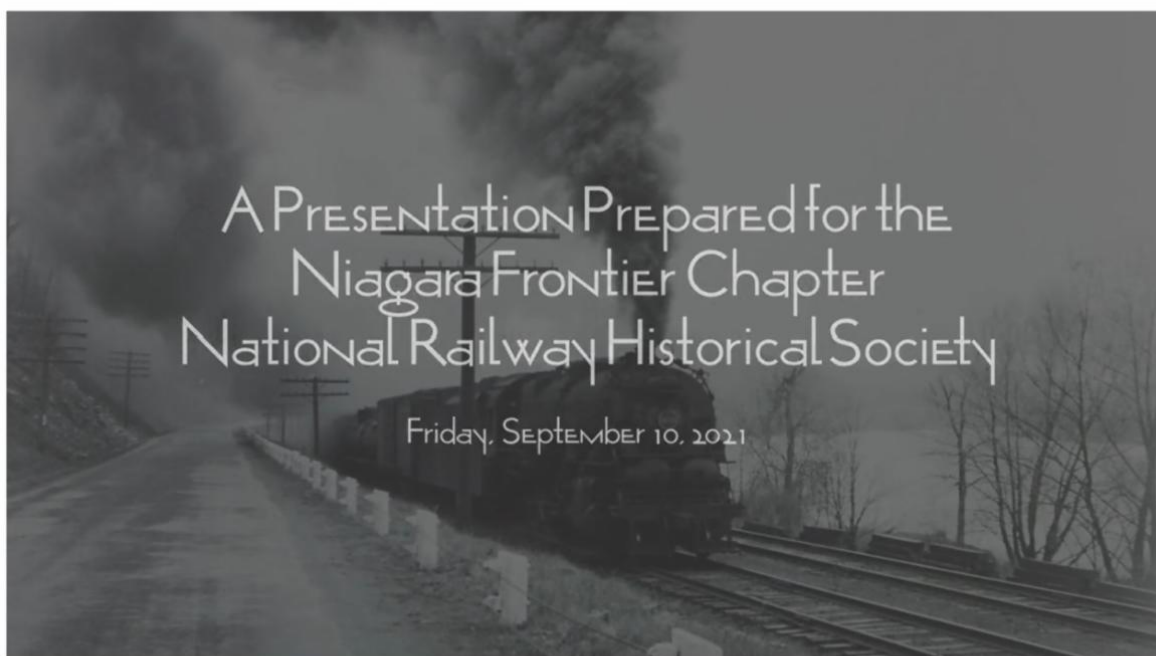
Volume 6, Number 6

June 2022

The NMRA's *Turntable* is a monthly publication which, like a railroad turntable, will lead you in several directions on the internet.

This e-publication is a collection of railroad and model railroad videos, podcasts, websites, and/or other information freely available on the internet that we think may be of interest to you. The NMRA claims no ownership of this information, nor do we endorse its creators or their websites. The *NMRA Turntable* will not promote individuals or their for-profit ventures.

## Turning a Hobby Into a Lifelong Legacy



### [How John M. Prophet III Lived with Steam](#)

This video was shot in September of 2021 when the presenter was asked by the Niagara Frontier Chapter of the NRHS to give a talk about John M. Prophet's life and how he came to be one of most widely regarded "railfans" during his lifetime. John was considered an expert on the Pennsylvania Railroad, often knowing more about the equipment and operations of the railroad than their company officers and employees did.

Through his photographs, movies and sound recordings of trains from the

mid-1930s until the early 1970s, we learn about the history of John, his family, and the technology he used to create his incredible collection of archives.

To hear more of John's sound recordings, please listen to the "Living with Steam" podcast on Apple Podcasts, Spotify, Amazon Music, or wherever you listen to your favorite shows.

## Delving Into Details



### [Sam Swanson, MMR® on Adding Details](#)

This clinic was given for the Capital Division of the North Central Region of the NMRA in March of this year. Sam Swanson, MMR® discusses a wide range of techniques that he has used to create details to be added to his structures and scenes to bring them alive.

The model pictured here won the Gold Award at the 2016 Indianapolis National Convention. Sam shows how he built and detailed this model along with several other models and scenes.

## How to Install a WiFi Decoder





## *How to Install a WiFi Decoder*

Here's something a little different: controlling your trains with a WiFi signal instead of through the tracks. This concept lends itself to dead rail applications and could eliminate the need for tedious track cleaning.

In this episode, John will show you how to install a LocoFi™ module into a Kato C44-9W. These modules are currently only available for HO and larger scales.